

DOUG ZEE  
609-820-2690 CELL  
(856) 589-3891  
FAX 582-1132

 **Zee**  
**orchards inc.**  
*PEACHES - NECTARINES-APPLES*

708 Mullica Hill Road  
P.O. Box 40  
Richwood, NJ 08074

E-mail:zeepeach@comcast.net

# Glassboro High School



## Sports Hall of Fame



Masso's Columbus Manor Ballroom  
October 20, 2006  
6:00 PM

*With true admiration of those who demonstrate  
dedication, persistence and spirit -  
We Applaud You!*

## CUSTOM CABINETS & FURNITURE

Extraordinary Kitchen Design, Bathroom &  
"Built in" Cabinetry



**Van Dexter  
Design**

*...So Nice to Come Home to*  
♦♦♦♦♦♦♦♦♦♦

**Featuring the finest in:**

- ♦ Expert Design Service
- ♦ True Custom Cabinetry
- ♦ Enduring Counter Surfaces
- ♦ "In House" Installation
- ♦ Quality Appliances
- ♦ Impeccable Customer Service

**Visit our Design Showroom at:**  
116 Densten Road, Sewell, NJ  
**(856) 589-0232**

Proud member of:



NJ Lic#13VH00472000

**Hours:**

**Weekdays 9-5 Wed. 7-9 p.m.**

**CORIAN®**  
SOLID SURFACES



Click on our website at: [www.vandexterdesign.com](http://www.vandexterdesign.com)

**Rowan University  
salutes the inductees of  
the Glassboro Sports  
Hall of Fame for their  
commitment  
to excellence and  
contribution  
to the community.**



**Expect More. Achieve More**



STATE & FEDERAL  
LICENSED

PHONE: 856-881-7575  
FAX: 856-881-8477  
www.bobs littlesportshop.com



**BOB'S LITTLE SPORT SHOP**  
INDOOR PISTOL AND ARCHERY RANGE  
HANDGUNS ~ SHOTGUNS ~ RIFLES ~ ARCHERY

316 N. DELSEA DRIVE GLASSBORO, NJ 08028  
HOURS MON. THRU FRI. 10 AM-9 PM  
CLOSED FOR DINNER 6 PM TO 6:30 PM SAT. 10 AM—5 PM

In Honor of  
**Robert L.  
Viden, Sr.**

From his Great-Grandchildren

**Kyle, April, Tyler,  
Jack, Cole  
& Elise**

**HARPER**



**HARPER**



- Behind the Wheel Instruction
- Defensive Driving Classes
  - Road Test Vehicles
- Professional Instructors
  - Beautiful Automobiles
  - Low, Low Rates
- Anti-Drinking Driving Programs for High Schools
  - Quick Scheduling
  - State Eye Exams
  - State Written Tests

*OVER 10,000 STUDENTS INSTRUCTED*

**Phone 856-589-8800**

**Fax 856-589-8018**

**Craig Harper, Owner**  
**115 West Jersey Ave, Pitman, NJ 08071**

*Licensed by the State of NJ*  
**E-mail: harperdrivingschool@verizon.net**

[www.harperdrivingschool.org](http://www.harperdrivingschool.org)

# Glassboro Public Schools

[www.glassboro.k12.nj.us](http://www.glassboro.k12.nj.us)

560 Joseph Bowe Memorial Boulevard  
Glassboro, New Jersey 08028



Phone: 856-881-0123  
Fax: 856-881-0884

Janet R. Holdcraft, Ed.D  
Assistant Superintendent

Walter S. Pudelko III, CPA  
Business Administrator

Michael R. Gorman, Ed.D

Superintendent of Schools

Dear Fans of Glassboro Athletics,

This is my second Hall of Fame Induction Ceremony and it is every bit as exciting as was the first. Our collective appreciation goes to the Hall of Fame Committee and all those who have worked to reinstate the Athletic Hall of Fame. Glassboro has a strong heritage in athletics and it is a tribute to not only those who have achieved so much but to those who have supported the various programs over the years, that we have the opportunity to honor the inductees this evening.

Charlie Smith, Tom Rutherford, Phil Barca, Kim Kirkpatrick, John Rodgers, Glen Esgro, and Jeff Lake are names that we have all seen on the sports pages of the *Times*, bringing honor to Glassboro High School. We also have the opportunity to acknowledge the outstanding achievements of Coach Bob Cleary, an institution at Glassboro High School. The 1993 Cross Country Team has run its way into the Hall and will rightfully be recognized as a team.

Thank you for supporting tonight's festivities and honoring all who have brought distinction to Glassboro athletics. Your support makes all the difference.

Congratulations to tonight's inductees, you have made us proud.

Sincerely,

Michael R. Gorman, Ed.D  
Superintendent of Schools

# ANGELO'S DINER

26 N. MAIN ST.

Glassboro, N.J. 08028



JOE & MARY ANN JUSTICE

PHONE 881-9854

SINCE 1946

The *St. Anthony's Society*  
Congratulates

ALL of the Hall of Fame recipients.  
We support, with pride, Glassboro  
sports, the players and coaches.

Glassboro:  
*A winning Tradition!*

# BRIDA STONE, INC.

Natural Stone Sales & Landscape Supplies  
555 Mullica Hill Rd.  
Glassboro, NJ 08028

Introducing  
Keepers of the  
Light  
Candles

Local: 856-881-1700 x 22  
Fax: 856-881-3877  
E-Mail: [sales@bridastone.com](mailto:sales@bridastone.com)  
[www.bridastone.com](http://www.bridastone.com)

Custom Gift  
Baskets  
available for  
the Holidays

THERE  
IS NO  
SUBSTITUTE  
FOR  
NATURAL  
STONE.



Brida Stone Inc. specializes in the finest hand-cut and finished hearths & mantles to bring warmth and character to any fireplace.

We also carry a large variety of natural landscaping stone for dry stacked garden walls and other decorative purposes.

Our knowledgeable staff is readily available to assist you.

Come and view our beautiful outdoor displays to see the many quality products that we have to offer.

## Program

Invocation

*Rev. Charles Harvey*

Introduction of Former Inductees

*Mr. George Beach & Mr. Charles Smith*

Introduction of Class of 2005 Honorees  
*Honorable Rusty Marshall-67'*

Introduction of 1993 Undefeated  
Boys Cross Country Team  
*Coach Kevin Timbers*

Dinner

*Garden Vegetable soup  
Roasted Spring Chicken or Deviled Crab Cakes  
Green Beans Almandine and Broccoli with cheese  
Dessert- Warm Apple Pie with Vanilla Ice Cream*

Cash Bar

Induction Ceremony

*Honorable Rusty Marshall*

Benediction

*Rev. Charles Harvey, Assoc. Pastor EBC*

Alma Mater

*Neath the azure Jersey skies*

*Alma Mater stands.*

*Hail to thee, dear alma Mater,*

*Alma Mater grand.*

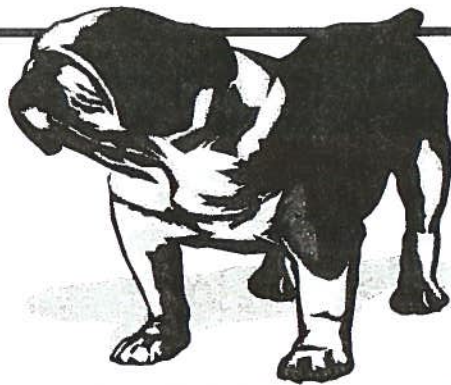
*Name that's ever glorious*

*Fame 'twill never die.*

*Hail to thee, dear Alma Mater.*

*Hail to Glassboro High.*





Congratulations to all the Sports Hall of Fame Inductees! What a great honor to be inducted to this very exclusive club of outstanding athletes. Glassboro High School has been blessed with a plethora of excellent athletes throughout the history of the school district. How fortunate for my young men and ladies to have athletes of your caliber as role models today. Your love of sports, dedication, and continued participation make you deserving recipients of this award.

Best wishes,  
Santina Haldeman, Principal of GHS

## Hi-Per Tech Master Brake Products

# Sizzling Summer Sale

Special Wholesale Pricing

### CXS Ceramic Enhanced Brake Pads

Ceramic enhanced formula limits brake noise and cuts down on brake dust. Chamfered and slotted friction design. Original equipment constraints layer shims (where OEM supplied.)

As low as **\$32.88** Set

### MX/MPD Premium Brake Pads

Longer life pads. Includes brake shims (where OEM supplied.)

As low as **\$19.88** Set

### Semi-Metallic Brake Pads

As low as

**\$13.88** Set

For Import & Domestic vehicles.

### MXS HiperMet Ultra High Performance Metallic Brake Pads

Best to use for trucks, 4x4's, vans, Pickups, SUV's, fleet and heavy duty use vehicles. Black Powder coated steel. Includes brake shims (where OEM supplied.)

As low as **\$29.88** Set

### Brake Drums & Rotors

As low as

**\$14.88** Each

All other Drums & Rotors now on sale

**15% off**

### Brake Shoes

For Domestic & Import cars and light trucks.

Bonded As Low As **\$13.95** Set

Riveted As Low As **\$16.95** Set

\* With Exchange

### Oil Filters

Starting at

**\$1.79**

### Air Filters

Starting at

**\$4.99**

All makes and models.

### Wiper Blades

Starting at

**\$6.99**

All makes and models.

100 S. Delsea Drive Glassboro, NJ  
(800) 881-1488 • (856) 881-0900  
Fax: (856) 881-0882  
Email: hptbrakes@aol.com



## Hi-Per Tech

Discount Brake Products Inc./  
High Performance with Confidence



# PARKE BANK

*A Return to Better Banking*

**Congratulates  
Glassboro High School  
Hall of Fame Inductees**

Main Office  
601 Delsea Drive  
Sewell NJ 08080  
(856) 256-2500

Branch Locations  
567 Egg Harbor Road  
Sewell, NJ 08080  
(856) 582-6900

501 Tilton Road  
Northfield, NJ 08225  
(609) 646-6677

1610 Spruce Street  
Philadelphia PA 19103  
(215) 735-1999

**1-866-PARKEBK**

**FDIC**

**[WWW.PARKEBANK.COM](http://WWW.PARKEBANK.COM)**



## Groff's Mill Pond Nursery

*Proudly Serving Our Community for Over 45 Years*

**Landscaping \* Lawn Care  
Nursery \* Mill House \* Garden Center**



**Store Hours:  
Monday-Friday 8-5  
Saturday 8-6 \* Sunday 9-5**

**Hours vary according to season**

**Visit our website at [www.groffsgardens.com](http://www.groffsgardens.com)**

## 1993- Undefeated State Champions



**Tom Horne, Tim Graves, Mark Sahm, Gary Sowers,  
Chris Berrios, James Russo, and Mike Gates  
Coach, Kevin Timbers**

### 1993 Cross Country Team

Under the leadership of head coach Kevin Timbers, the 1993 Cross Country team finished the season with an undefeated 7-0 overall record (6-0 in their division) and ran away with the school's first Tri-County Classic Division Championship title.

With just two runners the previous year, coach Timbers fielded the school's most competitive cross country team to date in 1993. The Bulldogs bested Penns Grove to cap their dual-meet season and capture the championship. The team took second in the Gloucester County Championships and Fifth in South Jersey Group I. They were ninth in the NJSIAA Group I State Championship.

Among the team leaders were Tom Horne and Tim Graves, widely known as two of the finest runners in South Jersey. Other team members included Mark Sahm, Gary Sowers, Chris Berrios, James Russo and Mike Gates.

# Glassboro High School

## Varsity Club



Congratulations to all 2006  
new inductees into the

## Glassboro Athletic Hall of Fame!

Phil Barca ~ '81

Glenn Esgro ~ '86

Jeff Lake ~ '93

Kimberly Kirkpatrick ~ '88

John "Jack" Rogers ~ '88

Tom Rutherford ~ '67

Charles "Charlie" Smith ~ '63

Bob Cleary ~ Coach

Undefeated Boys Cross Country  
Team - Coach Kevin Timbers ~ '93

I would like to nominate the following person to be considered for the GHS Sports Hall of Fame in the following category (check one):

Contributor \_\_\_\_\_ Athlete \_\_\_\_\_ Coach \_\_\_\_\_

Nominee: \_\_\_\_\_

Year of Graduation \_\_\_\_\_

Nominee's Address

\_\_\_\_\_  
Zip \_\_\_\_\_

Nominee's Phone Number- \_\_\_\_\_

My Name: \_\_\_\_\_

Phone Number: (\_\_\_\_) \_\_\_\_\_

My Address:

\_\_\_\_\_  
Zip \_\_\_\_\_

Mail to: Mr. Jeff Cusack  
Glassboro High School  
550 Jos. Bowe Blvd.  
Glassboro, NJ 08028

PLEASE RETURN BY: January 20, 2008



**We  
Install**

**We  
Deliver**

# PEACH COUNTRY MULCH

**Mowers - Mulch - Topsoil**

**856-589-3953 Ext. 6**



NEW HOLLAND

COMMERCIAL • FARM • CONSUMER PRODUCTS  
NEW HOLLAND • SNAPPER • MEYERS • DURAND  
CUB CADET • BUSH HOG • CUSTOM TRAILER

**PEACH COUNTRY TRACTOR, INC.**

SALES - PARTS - SERVICE - RENTAL  
TRACTORS - LOADERS - BACKHOES

ROUTE 322  
RICHWOOD, NJ 08074  
(856) 589-3953 • Fax 582-9682

*Thank you to our  
Athletic Hall of Fame Patrons*

Kate & George Beach Jr.  
Robert J. Beach MD  
Laura Boyd  
Connie & George Donnelly  
Ralph & Pat Johnson  
Leo & Mary McCabe  
Louise & Walter Taggart  
Alice & George Tanger

## Glassboro Board of Education

Linda M. Emory, President  
June H. Longley, Vice President  
Peter J. Calvo  
Susette Jones  
Chris Kane  
Edward Keith  
Frank Mitcho  
Nancy Polhamus  
Elizabeth Volz

## Central Office Administrators

Michael R. Gorman, Ed. D Superintendent  
Janet R. Holdcraft, Ed. D., Asst. Superintendent  
George A. Leone, Asst. Superintendent/Board Secretary

## Glassboro High School Administrators

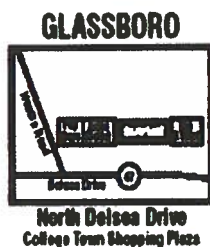
Santina S. Haldeman, Principal  
Jeff Cusack, Asst. Principal Athletics ~ Activities  
Cindy Kates, Asst. Principal

# Everything you need.

Everything you need to go with it.

Don't go store to store comparing prices and selection. Staples has everything under one roof – more than 45,000 office products – all at great low prices. Plus, friendly store associates to help you find everything on your list.

**Staples is proud  
to support  
Glassboro High  
School Athletics**



Address: 767 N. Delsea Drive (Route 47)  
Phone: 856-307-1573  
Fax: 856-307-1458  
E-Mail: [cc1515@staplescopycenter.com](mailto:cc1515@staplescopycenter.com)  
Store Hours: M-F 7am-9pm;  
Sat 9-9; Sun 10-6

**STAPLES**

that was easy.

©2004 Staples, Inc.

*A Professional Sign  
Manufacturing Corporation*



**OUTDOOR ADVERTISING, INC.**

- BILLBOARDS • MAGNETICS •
- SANDBLASTED • HAND CARVED •
- BANNERS • VINYL GRAPHICS •
- PROJECT SIGNS • BOATS •
- VEHICLES • GLASS • FLAGS •
- DIGITAL PRINTING •

**856-881-4300**

**US RT. 322 • GLASSBORO**  
FAX 856-881-2399 or [www.astrosignco.com](http://www.astrosignco.com)

*Serving Our Customers  
From Design Through Installation*

# NOMINATION FORM for the GLASSBORO HIGH SCHOOL SPORTS HALL OF FAME

Criteria for nomination of candidates:

**Athlete:** Candidate must be an alumnus of Glassboro High School and have graduated ten years prior to nomination. Consideration will be made on athletic accomplishments while at Glassboro High School and beyond.

**Coach:** Candidate will be considered on the basis of accomplishments while coaching at Glassboro High School.

**Contributor:** Candidate will be considered on the basis of contributions to the athletic department and student athletes of Glassboro High School.

All Candidates will be considered on the basis of character, integrity, and good sportsmanship during high school and beyond, as well as achievements or contributions to the Glassboro High School athletic department.

Complete form on next page and return to Jeff Cusack.

Buy Direct At  
Wholesale Prices



Come visit our  
6000 sq. ft.  
showroom!

# QUALITY CARPETS, INC.

Doubletree Plaza, Rt. 47 • Glassboro • 881-6911

Mon.-Fri. 9am-8pm • Sat. 9am-5pm • Sun. 10am-4pm

**Special pricing for Contractors and Home Builders**

**STOCK LAMINATES** As Low As ..... \$1.49 per ft.  
**PERGO ACCOLADE** ..... \$2.89 per ft.  
**PERGO PARADIGM** ..... \$2.99 per ft.  
**PERGO SELECT** With Softenguard ..... \$3.49 per ft.  
**ARMSTRONG LAMINATE FLOOR** ..... \$2.99 per ft.

**MIRAGE 3/4 SOLID PRE-FINISH OAK FLOOR**  
3/4 Solid Red Oak Solid Hardwood ..... \$4.40 per ft.  
3/4 Solid Maple Hardwood ..... \$4.89 per ft.  
3/4 Solid Birch Hardwood ..... \$4.87 per ft.  
3/4 Solid Cherry Hardwood ..... \$6.99 per ft.  
*Installation Available - Give your Home The Look Of Nature*

**ITALIAN CERAMIC AS LOW AS \$1.49 PER FT.**  
12x12 Soft Stone Look ..... \$2.09 per ft.  
12x12 Textured Ceramic Tile ..... \$2.29 per ft.  
12x12 Std. Marbleized Look ..... \$2.49 per ft.  
12x12 Mexican Tile ..... \$2.99 per ft.  
Casa Valencia Tile ..... \$1.79 per ft.

**WE'LL BEAT ANY  
HOME CENTERS  
PRICING**

**1,000s Of Rolls Of Carpeting,  
1000s Of Sq. Ft. Of Laminates  
IN STOCK**  
For Immediate Installation  
Or Pick Up

**3/4" SOLID HARDWOOD**  
3 1/4" Wide • Gunstock Or Natural  
**\$4.99** per ft.  
In Stock For Immediate Pick Up  
Installation Available



**Back To School  
Means Savings  
For You!**

**CARPET  
UP TO 3 ROOMS  
\$475  
Up To 40 Yards  
Completely Installed**

\*See store for details

**\$500 OFF  
\$2 Off Per Yard**

Up To 250 Yards

**QUALITY  
CARPETS, INC.**

Glassboro • 881-6911

in this ad. Coupon valid on reg. carpet stock only. Not valid on other offers or prices. Coupon must be presented prior to purchase. Expires 8-30-95.

**FREE  
Remnant**

Buy One Remnant, Get The Second  
Remnant Of Equal Or Lesser Value Free

**QUALITY  
CARPETS, INC.**

Glassboro • 881-6911

With this coupon, Customers can receive a second remnant of equal or lesser value free. Coupon must be presented prior to purchase. Expires 8-30-95.

We service all shore points.



**Congratulations to the 2006 Inductees to  
the Glassboro High School  
Athletic Hall of Fame**

***David Kalapos***

**ifs** Integrated Financial Strategies, Inc.

*Partners in the Creation and Preservation of Wealth*

*An Advisory Affiliate of*

*Karr Barth Financial Planning, Inc. A Registered Investment Advisor*

**40 Monument Road  
Bala Cynwyd, Pennsylvania 19004**

**OFFICE (610) 660-4022 · CELL (609) 634-0199 · FAX (610) 949-0491**



civil engineering  
land surveying  
landscape architecture  
land planning  
environmental science  
forest management

creative land use design

**LAND DIMENSIONS  
ENGINEERING**

*Each piece of land is unique in our multidimensional universe. . .  
each piece of land is unique because of its relationship to the community.*

**[www.landdimensions.com](http://www.landdimensions.com)**

6 East High Street, Glassboro, NJ 08028

856/307-7800

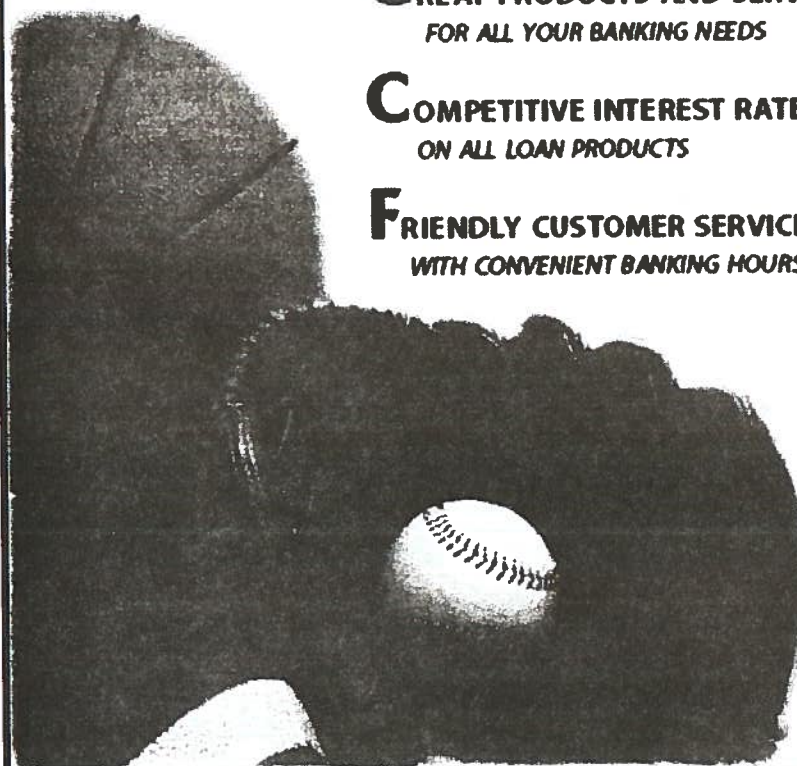
856/307-7805

*PROUD SPONSOR OF THE*  
**GLASSBORO HIGH SCHOOL  
SPORTS HALL OF FAME**

**G**REAT PRODUCTS AND SERVICES  
FOR ALL YOUR BANKING NEEDS

**C**OMPETITIVE INTEREST RATES  
ON ALL LOAN PRODUCTS

**F**RIENDLY CUSTOMER SERVICE  
WITH CONVENIENT BANKING HOURS



**GCF BANK**

Gloucester County Federal Savings Bank  
(856) 589-6600 [www.GCFBANK.com](http://www.GCFBANK.com)  
Your choice for a *better community bank.*



**OPEN  
SATURDAY**

**ERCO**  
SINCE 1963

**LARGE  
INVENTORY**

**"A Family Owned Business"**

**43 YEARS IN GLASSBORO**

**BLINDS**

32 N. Deksea Drive  
Glassboro, NJ 08028

856-881-4200

Fax 856-881-7330

www.ERCOonline.com



**CEILINGS**  
OVER 100 SELECTIONS  
IN STOCK

*"Basement Specialist"*



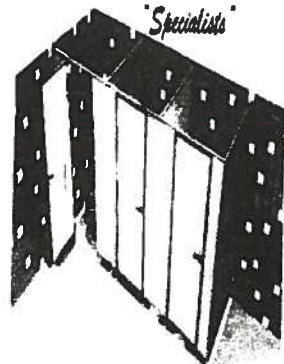
• HONEY  
• VERTICALS  
• HORIZONTALS  
• WINDOW FILM  
• POLAR SCREENS

**CUSTOM SIZED  
TO YOUR NEEDS**

**"NO JOB TOO SMALL"**  
**"WE EVEN DO TELEPHONE BOOTHS"**

**BATHROOM  
ACCESSORIES  
& STALLS**

*"Specialists"*



Handicapped  
Accessories  
& More

**30-BLOCK**



**4X8, 9, 10, & 12' IN STOCK**

**"8" COLOR SELECTIONS**

**NEW JERSEY STATE CONTRACT #A87359**

**CHARLES E. SMITH, Jr. ~ '63**

Charlie Smith played quarterback and safety on the GHS football team under Coach Jim Doyle for four years. During his storied gridiron career, he was named to the Olympic Conference-First Team and All South Jersey Group I-Second Team several times and was twice an All South Jersey-Honorable Mention.

Upon graduation, Smith earned scholarships from the High School Student Council and the Gloucester County Bar Association which helped him attend Westminster College (Pennsylvania). There he was named Western Pennsylvania Conference-First Team and NAIA District 18-First Team in 1964 and 1966. In 1966 he was named to the *Pittsburgh Post Gazette* First Team and earned an Honorable Mention from the Pennsylvania Associated Press.

Smith earned a master's degree from West Virginia University. Today he serves as a human resources manager with NHS Services. He and his wife Kathleen—also a Glassboro High School grad—have two children and live in Glassboro.



## MT. PLEASANT ORCHARDS

*Quality Peaches, Apples & Cider*

BUD, LOU, & JAKE REUTER  
*Proprietors*

P.O. BOX 25, 160 Richwood Rd.  
Richwood, NJ 08074  
589-4407

(856) 881-5000

FAX (856) 881-1269

### H & H DISCOUNT APPLIANCE COMPANY

*"Since 1945"*

"AS CHEAP AS THE BIG STORES,  
BUT FAR BETTER SERVICE"

Rte. 47 College Town Center  
Glassboro, NJ  
MWF 10-8 • Tues & Sat. 10-5  
Closed Thurs. & Sun.

MIKE

(856) 582-7007



## ALLAN A. RADEN, DMD

### FAMILY DENTISTRY

Centre At Doubletree

814 N. Delsea Dr.

Glassboro, NJ 08028

**Connect** with your child's academic progress.

Log on to

**LETTERGRADE**

By accessing the district's website @  
[www.glassboroschools.us](http://www.glassboroschools.us)

## Sneaks N' Stuff

ATHLETIC FOOTWEAR FOR THE ENTIRE FAMILY  
(SERVING THE AREA SINCE 1979)

PH. (856) 589-3358  
FAX (856) 589-3275

COLLEGETOWN SHOP. CTR.  
757 N. DELSEA DRIVE  
GLASSBORO, NJ 08028

## Your HOME TOWN CLASS RING HEADQUARTERS

*We're here to offer you the best price, service  
and selection on the Class Ring of your choice.*



Made  
in U.S.A.

Prices Starting at

**\$119**

*Stop by today and save!*

♦ GOLD LANCE Prices apply to selected styles. See jeweler for details. Offer expires

**Broadway Jewelers**

832 Centre at Doubletree  
Glassboro, NJ 08028

Visit us at [www.goldlance.com](http://www.goldlance.com)

## The Athletic Hall of Fame Committee



Congratulates



All of the 2006  
Honorees.



Phone: 881-6855  
Fax: 881-0693

210 S. Delsea Drive  
Glassboro, NJ 08028

## MASSO'S PARTY RENTAL

Tents, tables, chairs, staging, dance floors & much more

Nick Masso  
Rich Masso

Mike Slowinski  
Joseph Masso

**DEL - VAL**

Heating & Air Conditioning Inc.

P.O. Box 10  
Glassboro  
NJ 08028  
856-881-0576

Lic # 13VH00036500  
*NOW OFFERING DUCT CLEANING*

Phone: 856-881-4444  
Fax: 856-881-2932



## Tag's Auto Supply

12 W. HIGH STREET, GLASSBORO, NJ 08028

Hours Mon-Fri-8-6 Sat-8-4

*AFFILIATED AGENCIES INC.*  
*INSURANCE*

ALL FORMS OF INSURANCE

725 North Main Street  
P.O. Box 545  
Glassboro, N.J. 08028  
589-0400 \* 881-8600

## THOMAS RUTHERFORD ~ '67

As a standout tackle for the GHS football team for four years, Thomas Rutherford earned numerous accolades. He was named Olympic Conference South-First Team Tackle three years in a row and was named South Jersey Group I-First Team Tackle for three years. He was All-State Group I-First Team Tackle in 1967.

Rutherford also competed in track for four years, ranking fifth in shot put in the 1967 State Groups I and third in shot put in the South Jersey Invitational. Tom held the school record in the shot put at 53' 8" and also ran a 53.8 second ¼ mile. In 1967, the team was State Champions in Group I.

He also earned two varsity letters in basketball.

Rutherford and his wife Cindy have five children. He works as a machine operator with Daimler Chrysler.



Special Thanks  
to the  
Hall of Fame Committee

Ms. Jean Bower

Mr. George Beach

Mr. Robert Cleary

Mr. Jeff Cusack

Mr. Joseph Herrschaft

Mr. George Johnson

Mr. David Kalapos

Mr. Bill Lingerfield

Ms. Anna Stewart Miller

Mr. Charles Smith

Mrs. Louise Taggart

*Congratulations*



*from your fellow coaches, players, and fans !*



**Glassboro**

*High School Football*



Anthony & Kim

# Esgro's Italian Market

*Italian specialty Sandwiches & Pastas  
Catering Available*

12 Gerard Road  
Glassboro, NJ 08028

856-863-9200  
856-863-9600 Fax

*Compliments of*



322 E. HIGH ST. P.O. BOX 216  
Glassboro, NJ 08028

(856) 881-7960  
Fax (856) 881-8853

Barry Straga

Dennis Straga

## PHILIP A. BARCA ~ '81

Philip J. Barca competed in soccer, basketball and baseball during all four years at Glassboro High School. In his senior year, he played an integral role in the soccer and baseball Olympic Conference championships, as well as the basketball Group I State title. He was named to the All Olympic First Team that year in both soccer and baseball. He also earned All South Jersey Group I status in soccer and baseball and was named to the All State Group I-Second Team in Soccer that year.

Barca attended Catawba College (North Carolina) for one year where he played varsity soccer on a partial scholarship as well as varsity baseball. He later played varsity soccer at West Chester University.

Currently a Robbinsville Travel Soccer coach for U-11 boys, Barca is married with two boys. He is a senior manager with GlaxoSmithKlein Pharmaceuticals.





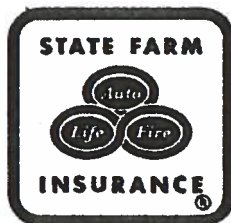
# Car insurance with **PERSONAL SERVICE.**

No extra charge.

At State Farm\* you get a competitive rate and an agent dedicated to helping you get the coverage that's right for you and the discounts you deserve. Nobody takes care of you like State Farm. Contact me. I'll prove it.



**Bill McAuliffe, Agent**  
315 Delsea Drive  
Glassboro, NJ 08028  
Bus. 856-881-6330  
bill.mcauliffe.bui5@statefarm.com



LIKE A GOOD NEIGHBOR, STATE FARM IS THERE.  
*Providing Insurance and Financial Services*

State Farm Mutual Automobile Insurance Company is a member of the State Farm Insurance Group. Insurance coverage is provided by member companies of the State Farm Insurance Group. Insurance coverage is provided by member companies of the State Farm Insurance Group.

PC0420116/06

"Over 46 years of bringing life into focus!"

725 N. Main Street

Glassboro, N.J.

881-3666



**RALPH S. BULLOCK & SON**

GUILD OPTICIANS

40 Elm Avenue

Woodbury Heights, N.J.

848-2899

[www.Bullockoptical.com](http://www.Bullockoptical.com)

## Cleary's Driving School



Specializing in the 16 year old program  
Serving Gloucester County

Owner: Robert Cleary

18 Normal Blvd. • Glassboro, NJ 08028

856-881-4583

## Homecoming 2006 Activities

10:00 AM

Parade- starting at GHS

11:00

Parade returns to GHS

11:45

Introduction of Homecoming Court  
Float skits begin

1:00

Hall of Fame Reception

1:40

Introduction of Hall of Fame Inductees

2:00

Kick off

Half Time

Homecoming Queen Crowned

## GLENN M. ESGRO '~ 86

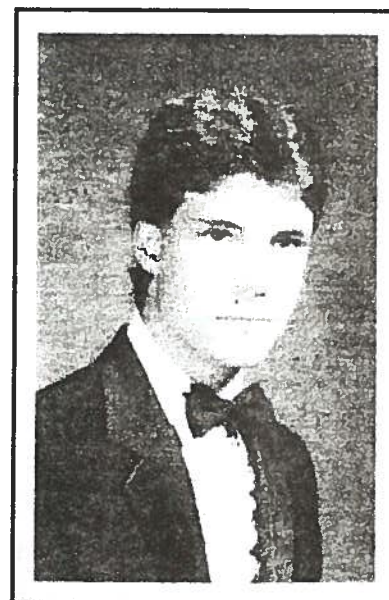
Glenn M. Esgro counts baseball, football and wrestling accomplishments among his most treasured high school memories. He was named *Sportsfolio* magazine's Best in New Jersey High School Sports "Player to watch in SJ Baseball for 1986" as a junior. Also in his junior year, he was named to the All-State Group I-Third Team as a catcher as well as to the Tri-County Conference Classic Division-First Team. He also led his team to the Diamond Classic championship with a win over Cherry Hill in the final game. He was named a *Gloucester County Times* All-Star (Honorable Mention) and a South Jersey Touchdown Club Lineman of the Week.

As a senior, he was the varsity baseball captain and catcher and earned the Captain Award. He was recruited by several schools to play baseball, and finally chose the University of Richmond where he earned a partial scholarship to play Division 1 varsity baseball for four years under Coach Ron Atkins.

Also during his senior year, Esgro was varsity football Captain. The defensive linebacker and offensive end was named the Glassboro High School Most Valuable Player for football as well as a Brooks Irvine Club Offensive Lineman of the Week. He was named to the South Jersey All-Group I as a defensive LB and was a *Gloucester County Times* All Star-First Team Defense.

Esgro capped off his high school career as Student Government President, earning a speaking role at his graduation along with special guest President Ronald Reagan.

Today, Esgro is married with two children. He is Director of US Trade for Biovail Pharmaceuticals and serves as a T-Ball coach for the Medford Youth Association.







## A. A. DUCKETT, INC.

AIR CONDITIONING • HEATING • REFRIGERATION

134 Maple Leaf Court • Glassboro, NJ 08028  
Tel: 856-863-1919 (Ext: 102) • Fax: 856-863-1122  
[www.duckett-welsch.com](http://www.duckett-welsch.com)

For all the latest in sports and high school news visit the following:

District Web site: [www.glassboroschools.us](http://www.glassboroschools.us)  
Daily Sports Schedule updates: 881-2200 ext. 711  
All team's schedules: [www.highschoolsports.net](http://www.highschoolsports.net)  
Directions to area high schools: [www.hsmaps.com](http://www.hsmaps.com)

Shirts Laundered



### CAPITOL CLEANERS

12 North Academy Street • Glassboro, NJ 08028

Hours: Mon-Thurs  
7 am - 6:30 pm

Gina Jin  
(856) 881-2549

Fri. 7 am - 7 pm  
Sat. 7 am - 6 pm

Barbers-MARVIN & EARL

### MARVIN HAIRCUTS *(with style)*

"SPECIALIZING IN THE NEWEST STYLES"  
WE MAKE YOUR FAMILY LOOK GOOD!

32 East High St.  
Glassboro, NJ 08028  
(856) 863-5677

Monday CLOSED  
Tues.-Thurs. 7:00-6:00  
Friday 7:00-7:00  
Saturday 6:00-4:00  
Sunday CLOSED



Full Service  
Family Salon  
213 W. High St.  
Glassboro

Turning Heads  
856-881-9200

- ◆ Expert Coloring
- ◆ Color Correction
- ◆ Updos
- ◆ Manicures
- ◆ Perms
- ◆ Foils
- ◆ Hair Removal
- ◆ Scalp & Hair Treatments

Senior discount: Tues. & Wed. 10% off any one service  
New Customers: \$5 OFF on any service \$25.00 or more. Ad must be presented at time of service & cannot be combined with any other offer.  
Coming soon: Facials, Massage, Pedicures & All Nail Services

## HALL OF FAME INDUCTEES

/83 Claude Abel*	73/05 Robin Glazer	55/76 Charles Randall
39/93 Pete Alaquia*	/79 Warren Grodowski*	78/98 Randy Randolph
73/79 Janice Aliberti	49/88 Audrey Groff *	85/91 Sean Redman
58/94 Joseph Anstatt	41/94 Jessee Harden *	63/05 Charles Repp Jr.
54/76 John Aveni *	63/96 Craig Harper	/76 Leona Reynolds
81/06 Phil Barca	65/76 George Hartsfield	88/06 John Jack Rogers
81/90 Kim Esagro Barcas	70/76 Gary Henderson	/84 Ray Rollins *
81/88 Lynda Barratt	41/77 George Hill *	67/06 Tom Rutherford
59/79 Robert Barratt *	43/94 Robert Hill *	94/05 Mark Sahm
54/96 Robert Bateman	39/94 William Hill *	85/98 Matt Saia
51/91 James Bell *	32/93 J. Garfield Jackson	68/98 Gary Saul
79/90 David Birts	56/85 Richard Jackson	73/91 Greg Sawyer
23/76 William Black*	76/98 Janice Bower Jenkins	61/80 John Schellenburger
/82 Roy Bloomingdale*	77/98 George Johnson	10/76 Ernest Schwobel *
65/98 Charles Booker *	27/76 Buck Jones *	32/87 Joseph Sivel *
73/90 Mark Bresani	55/92 Thomas Kane	78/96 Marva Bell Slaughter
42/76 Joseph Brigandi	70/76 Frank Kelly	63/06 Charles Charlie Smith
59/92 Joseph Brooks	93/06 Jeff Lake	38/78 Roscoe Smith *
35/76 Alvin Brown	73/84 June Mancini Kileen	/98 Kim Smith-Bey
33/90 Raymond Brown *	88/06 Kimberly Kirkpatrick	63/96 Russell Sned
53/92 Dors Thornton Bundy	88/05 Samuel Laspatha Jr.	39/76 Warren Spaeth *
54/86 Bernard Bunn	54/76 Lorraine Boyd Ledden*	40/93 John Steinert *
53/81 Peggy Reed Cannon	53/94 Paul Lee	49/86 Joseph Stetson
73/79 Albert Carino	69/98 Bill Lingerfield	78/87 Anna Stewart
60/89 Fred Carter Jr.	84/89 Gordon Lockbaum	78/88 William Strain
39/93 Fred Carter Sr.	86/96 Ruth Lockbaum	54/85 Louise Boyd Taggart
57/91 B. Fanfarillo Cassaday	60/92 Ralph Loper	27/76 Harry Tartaglione *
/06 Robert Cleary- Coach	61/80 Dennis Lynch	26/76 Gus Testa *
84/89 Caroline Cioffi	33/80 John Lyons *	52/89 William Thompson
60/92 William Clark	76/83 John Mancini	52/81 Beatrice Thornton
73/98 Jo. Aliberti Colarourio	70/76 Frank Mancuso	58/87 James Thornton
68/98 Louis Corradetti	77/96 Deb Thornton Mathis	78/98 James Tony Thornton
55/79 Nelson Cresson	59/78 William McDewitt	39/94 Sam Trifiletti *
75/84 Steve Crispin	43/87 Doug Mecouch	37/89 Clar Ruderow Turner*
49/86 William Datz	57/92 Vince Menna	36/76 Howard Viden *
70/88 Gwen Holmes Davis	43/76 Lee Meyers	33/94 Robert Viden Sr.
55/88 Dominick DePasquale*	27/77 Harry Miller *	26/83 Ed Walton *
39/76 Tex Dideo	29/76 John Miller	28/76 Allen Ware *
52/76 Con Domenic Donnelly	22/76 John Pete Miller *	43/77 Aubrey Warrington *
77/84 David Dorn	48/90 Bernard Minor *	70/88 Carolyn Williams
34/77 Jeanete Hutton Duffy	81/87 Nick Mitcho Jr.	69/87 Sandra Williams
76/96 Carol S. Lynch Egers	55/96 James Moore	60/92 Woodrow Williams
63/98 John Emgenbroich	33/93 James Moore *	64/85 James T. Wright
86/06 Glenn Esagro	54/77 William Patton	
53/76 Tony Esagro	84/96 Tanjia Perry	
43/77 Fred Fanfarillo*	70/76 William Pierce	
47/92 Tom Fanfarillo *	56/93 Carolyn Priest	

\* deceased The first date is the year of graduation and the 2nd date is the year inducted.



# We'll root for you on any field.

Commerce is pleased to support the people, projects,  
and activities that make life better for all of us.



**COMMUNITY • CARING • COMMITMENT**

**Commerce Bank**  
*America's Most Convenient Bank*  
1-888-751-9000

Commerce Bank  
Member FDIC

Sponsorship provided on behalf of Commerce Bank,  
Commerce Insurance Services and Commerce Capital Markets.

Commerce Capital Markets  
Member NASD/SIPC

**ALE'S AUTO SERVICENTER, INC.**  
FOREIGN & DOMESTIC AUTO REPAIRS • TOWING



11 COLLEGE AVENUE & MAIN STREET  
GLASSBORO, NJ 08028

(856) 881-6656



JAY T. ALE, OWNER

## **KIMBERLY KIRKPATRICK ~ '88**

Kimberly Kirkpatrick boasts an impressive list of winter and spring Track accomplishments at Glassboro High School. She was the state shot put champion in 1986, and placed second in shot put at the 1988 State Meet. In spring track, she earned Best Girls Performance status in her senior year. She was a qualifier in shot put and discus for the 1986 Spring Track State Meet.

Kirkpatrick played softball for three years at GHS, serving as captain in her senior year. She was named Tri-County Classic Division Second Team Outfielder and earned the Coaches' Award in 1988.

The four-year field hockey sweeper was part of the 1987 Tri-County Championship squad. She was also a South Jersey Group I Finalist that year.

While earning dual undergraduate degrees at Slippery Rock University (Pennsylvania), Kirkpatrick served as team captain in field hockey in her junior and senior years. There she also played softball.

With a master's degree from West Chester University, Kirkpatrick is Chairman of the Riverside HS Health and Physical Education Department where she has also coached softball and field hockey at various levels. She continues to live in Glassboro.





Always  
There  
For You



**Ready to Sell or Buy a Home?  
Let 28 Years of Experience  
Work For You!**

**ERA David Young Realtors  
725 N. Main St. Glassboro**

**(856)881-3100**

**dyoung@jersey.net**

Each office is independently  
owned and operated  
ERA Real Estate

Select a Realtor by their knowledge,  
expertise and a desire to work for you.

MLSP  
**MLS**



**Congratulations to all  
members of  
Glassboro's Sports  
Hall of Fame.**

## **ROBERT CLEARY, COACH**

In his 25<sup>th</sup> year as a coach and teacher at Glassboro High School, Bob Cleary earns a spot in the Athletic Hall of Fame in the coaching category. He has served as head coach of the Bulldog boys' track, girls' track wrestling and football teams over the last quarter century, earning accolades for his contributions to each. He was named to the Gloucester County Sports Hall of Fame and the South Jersey Coaches of Boys Athletics Hall of Fame in 2002. Also in 2002, he was named Gloucester County Teacher of the Year. He earned spots in the South Jersey Football Coaches' Hall of Fame and the New Jersey Scholastic Coaches Association Hall of Fame in 2000. In 1996, he was named Coach of the Year by the Touchdown Club of Southern New Jersey. The Tri-County Conference honored him as Coach of the Year for three consecutive years from 1999-2001. He also earned that title from GSYIFL.

Under Cleary's leadership, the Bulldog Football team took the South Jersey Group I state title in 1987 and again in 1999. During his 16-year tenure as head coach, the team boasted an impressive 121-42 record.

Cleary graduated from Pennsbury High School where he lettered in Football for three years. He also lettered for three years as a football player at West Chester State University. The Glassboro resident and his wife Lorraine have four children.



## Dalton Insurance Agency, LLC



### Good Luck Starts Here

When it comes to insurance, our philosophy is simple~ the broadest coverage at the best price, fast claims response and the advantage of a local agent. See us today. You'll be amazed at the difference personal service makes.

Two locations to better serve our client's needs.

206 W. HIGH STREET  
GLASSBORO 08028  
856-881-2862  
Fax: 856- 881-4777

503 Beckett Road  
Logan Twp. 08085  
856-241-3399  
856-241-3559

Business ~ Life ~ Health ~ Auto ~ Home

## JOHN R. ROGERS ~ '88

John "Jack" Rogers was a four-year member of both the wrestling and baseball teams and played football for three years. The squad boasted a 22-3 record in 1988 with Rogers as team captain. He was named All Conference and All *Gloucester County Times*, and was named Co-MVP with fellow grappler Sam Laspata. He was the Yellow Jacket Tournament (Delaware) Champion as well as the Christmas Tournament Champion.

Rogers led the baseball team with a .386 batting average. As team captain, he was named Most Valuable Player and earned All Conference status. He also helped the football team to a 10-0-1 record in 1988. Under Coach John Aveni he played kicker, and he served as QB under Coach Bob Cleary.

After graduating from Glassboro High School, Rogers played baseball at Campbell University (North Carolina), where his team took the Big South Conference Championship. There he was also named to the Presidents All-Academic Team.

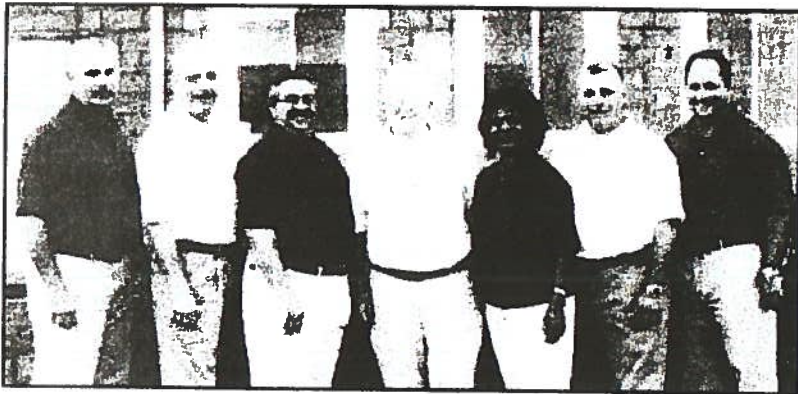
Today, Rogers serves as a health and physical education teacher, assistant athletic director and head golf coach near his home in Raleigh, North Carolina. He and his wife Amy have two small children.





*The Governing Body  
of the*  
**BOROUGH OF GLASSBORO**

*would like to congratulate the 2006 Glassboro  
High School Sports Hall of Fame recipients.*



*Pictured left to right:*

George Cossabone  
Council President, Tony Fiola  
Hector Cabezas  
Mayor Leo McCabe  
Ingres Simpson  
Joseph D'Alessandro  
Ed Malandro

**JEFF LAKE ~ '93**

Jeff Lake was a standout on the gridiron, playing varsity offense and defense during all four years at Glassboro High School. He was named All Tri-County Offense and Defense in 1991 and 1992. He was twice named the Touchdown Club's Defensive Player of the Week and was their 1992 Lineman of the Year. Also in 1992, he was named a Brooks Irvine Club Lineman of the Week and earned All South Jersey status. At the end of his senior year he earned the Rotary Bowl Coach "Golden Helmet Award." He received the Milton Hinton Academic Achievement Award at graduation.

Also a competitive track star for three years, Lake earned letters in shot put, javelin and discus in 1992. He also played basketball for three years and was JV and Freshman Captain.

Lake earned a full scholarship to Delaware State University where he was named a Blue Chip All-American Recruit in 1993. He played on the Rowan University football team from 1994-96.

Lake has been a life-long resident of Glassboro and is the proud father of three.

